

3	29/08/2019	LA	Third Issue (OPEN)		
2	28/08/2019	JM	Second Issue (OPEN)	Prepared:	LA
1	02/08/2019	LA	First Issue (OPEN)	Checked:	SM
Rev	Date	By	Comment	Approved:	LT

1:7,500

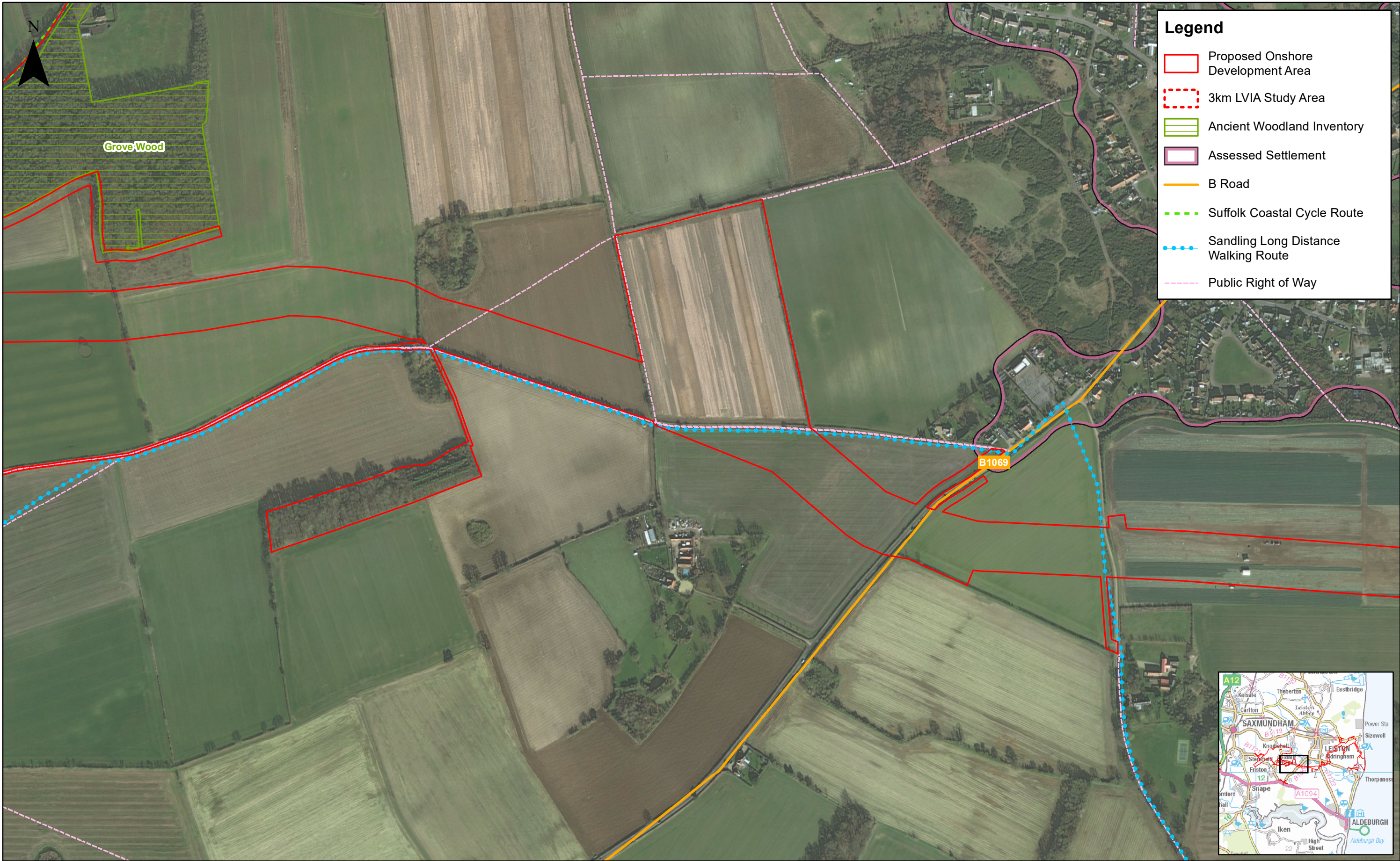
Scale @ A3



0100200m

Source: © Crown copyright and database rights 2019. Ordnance Survey 0100031673.  
Aerial Imagery Source: Esri, DigitalGlobe, GeoEye, Earthstar Geographics, CNES/Airbus DS, USDA, USGS, AeroGRID, IGN, and the GIS User Community  
© Natural England copyright. Contains Ordnance Survey data © Crown copyright and database right 2019.  
National Cycle Route data supplied by Sustrans and contains Ordnance Survey data © Crown copyright and database right (2019).  
This map has been produced to the latest known information at the time of issue, and has been produced for your information only.  
Please consult with the SPR Onshore GIS team to ensure the content is still current before using the information contained on this map.  
To the fullest extent permitted by law, we accept no responsibility or liability (whether in contract, tort (including negligence) or otherwise in respect of any errors or omissions in the information contained in the map and shall not be liable for any loss, damage or expense caused by such errors or omissions.

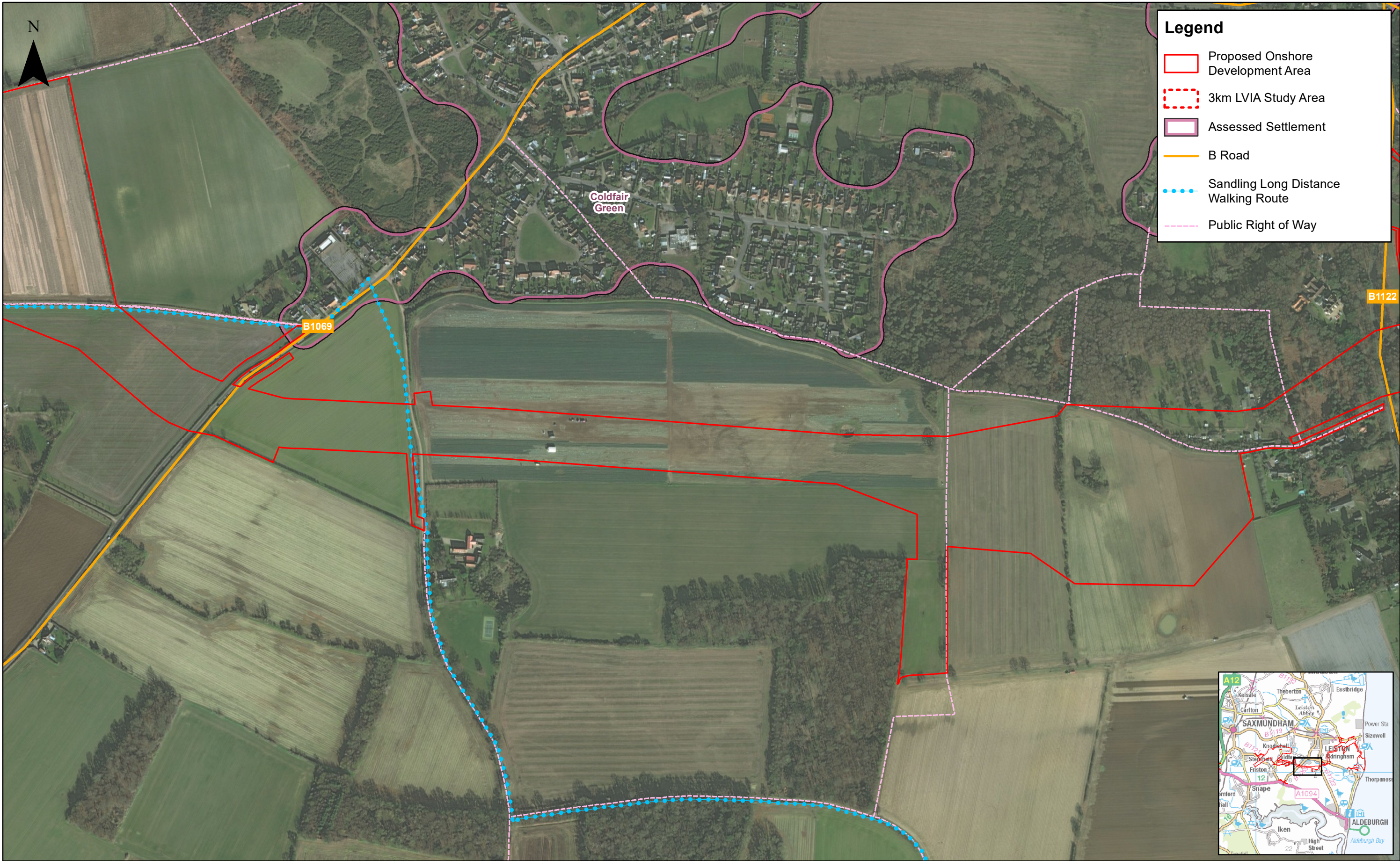
East Anglia ONE North			Drg No	EA1N-DWF-ENV-REP-IBR-000366	
Onshore Cable Route (Aerial)			Rev	3	Coordinate System:
(1 of 7)			Date	29/08/19	BNG
			Figure	29.6a	Datum: OSGB36





	3	29/08/2019	LA	Third Issue (OPEN)			<div>1:5,000</div> <div>Scale @ A3</div> <div></div> <div><small>Source: © Crown copyright and database rights 2019. Ordnance Survey 0100031673. Aerial Imagery Source: Esri, DigitalGlobe, GeoEye, Earthstar Geographics, CNES/Airbus DS, USDA, USGS, AeroGRID, IGN, and the GIS User Community © Natural England copyright. Contains Ordnance Survey data © Crown copyright and database right 2019. National Cycle Route data supplied by Sustrans and contains Ordnance Survey data © Crown copyright and database right (2019). This map has been produced to the latest known information at the time of issue, and has been produced for your information only. Please consult with the SPP Onshore GIS team to ensure the content is still current before using the information contained on this map. To the fullest extent permitted by law, we accept no responsibility or liability (whether in contract, tort (including negligence) or otherwise in respect of any errors or omissions in the information contained in the map and shall not be liable for any loss, damage or expense caused by such errors or omissions.</small></div>	<div>East Anglia ONE North</div> <div>Onshore Cable Route (Aerial)</div> <div>(2 of 7)</div>	Drg No		EA1N-DWF-ENV-REP-IBR-000366	
	2	28/08/2019	JM	Second Issue (OPEN)	Prepared:	LA			Rev	3	Coordinate System: BNG Datum: OSGB36	
	1	02/08/2019	LA	First Issue (OPEN)	Checked:	SM			Date	29/08/19		
	Rev	Date	By	Comment	Approved:	LT			Figure	29.6b		





3	29/08/2019	LA	Third Issue (OPEN)		
2	28/08/2019	JM	Second Issue (OPEN)	Prepared:	LA
1	02/08/2019	LA	First Issue (OPEN)	Checked:	SM
Rev	Date	By	Comment	Approved:	LT

1:5,000

Scale @ A3

0 100 200 m

Source: © Crown copyright and database rights 2019. Ordnance Survey 0100031673.  
Aerial Imagery Source: Esri, DigitalGlobe, GeoEye, Earthstar Geographics, CNES/Airbus DS, USDA, USGS, AeroGRID, IGN, and the GIS User Community  
© Natural England copyright. Contains Ordnance Survey data © Crown copyright and database right 2019.  
National Cycle Route data supplied by Sustrans and contains Ordnance Survey data © Crown copyright and database right (2019).  
This map has been produced to the latest known information at the time of issue, and has been produced for your information only.  
Please consult with the SPR Onshore GIS team to ensure the content is still current before using the information contained on this map.  
To the fullest extent permitted by law, we accept no responsibility or liability (whether in contract, tort (including negligence) or otherwise in respect of any errors or omissions in the information contained in the map and shall not be liable for any loss, damage or expense caused by such errors or omissions.

East Anglia ONE North

Onshore Cable Route (Aerial)

(3 of 7)

Drg No	EA1N-DWF-ENV-REP-IBR-000366	
Rev	3	Coordinate System: BNG Datum: OSGB36
Date	29/08/19	
Figure	29.6c	





3	29/08/2019	LA	Third Issue (OPEN)		
2	28/08/2019	JM	Second Issue (OPEN)	Prepared:	LA
1	02/08/2019	LA	First Issue (OPEN)	Checked:	SM
Rev	Date	By	Comment	Approved:	LT

1:5,000
Scale @ A3
0 100 200 m
Source: © Crown copyright and database rights 2019. Ordnance Survey 0100031673. Aerial Imagery Source: Esri, DigitalGlobe, GeoEye, Earthstar Geographics, CNES/Airbus DS, USDA, USGS, AeroGRID, IGN, and the GIS User Community © Natural England copyright. Contains Ordnance Survey data © Crown copyright and database right 2019. National Cycle Route data supplied by Sustrans and contains Ordnance Survey data © Crown copyright and database right (2019). This map has been produced to the latest known information at the time of issue, and has been produced for your information only. Please consult with the SPR Onshore GIS team to ensure the content is still current before using the information contained on this map. To the fullest extent permitted by law, we accept no responsibility or liability (whether in contract, tort (including negligence) or otherwise in respect of any errors or omissions in the information contained in the map and shall not be liable for any loss, damage or expense caused by such errors or omissions.

East Anglia ONE North
Onshore Cable Route (Aerial)
(4 of 7)

Drg No	EA1N-DWF-ENV-REP-IBR-000366	
Rev	3	Coordinate System:
Date	29/08/19	BNG
Figure	29.6d	Datum: OSGB36





3	29/08/2019	LA	Third Issue (OPEN)		
2	28/08/2019	JM	Second Issue (OPEN)	Prepared:	LA
1	02/08/2019	LA	First Issue (OPEN)	Checked:	SM
Rev	Date	By	Comment	Approved:	LT

1:5,000
Scale @ A3
0 100 200 m
Source: © Crown copyright and database rights 2019. Ordnance Survey 0100031673. Aerial Imagery Source: Esri, DigitalGlobe, GeoEye, Earthstar Geographics, CNES/Airbus DS, USDA, USGS, AeroGRID, IGN, and the GIS User Community © Natural England copyright. Contains Ordnance Survey data © Crown copyright and database right 2019. National Cycle Route data supplied by Sustrans and contains Ordnance Survey data © Crown copyright and database right (2019). This map has been produced to the latest known information at the time of issue, and has been produced for your information only. Please consult with the SPP Onshore GIS team to ensure the content is still current before using the information contained on this map. To the fullest extent permitted by law, we accept no responsibility or liability (whether in contract, tort (including negligence) or otherwise in respect of any errors or omissions in the information contained in the map and shall not be liable for any loss, damage or expense caused by such errors or omissions.

East Anglia ONE North
Onshore Cable Route (Aerial)
(5 of 7)

Drg No	EA1N-DWF-ENV-REP-IBR-000366	
Rev	3	Coordinate System:
Date	29/08/19	BNG
Figure	29.6e	Datum: OSGB36





3	29/08/2019	LA	Third Issue (OPEN)		
2	28/08/2019	JM	Second Issue (OPEN)	Prepared:	LA
1	02/08/2019	LA	First Issue (OPEN)	Checked:	SM
Rev	Date	By	Comment	Approved:	LT

1:5,000
Scale @ A3
0 100 200 m
Source: © Crown copyright and database rights 2019. Ordnance Survey 0100031673. Aerial Imagery Source: Esri, DigitalGlobe, GeoEye, Earthstar Geographics, CNES/Airbus DS, USDA, USGS, AeroGRID, IGN, and the GIS User Community © Natural England copyright. Contains Ordnance Survey data © Crown copyright and database right 2019. National Cycle Route data supplied by Sustrans and contains Ordnance Survey data © Crown copyright and database right (2019). This map has been produced to the latest known information at the time of issue, and has been produced for your information only. Please consult with the SPR Onshore GIS team to ensure the content is still current before using the information contained on this map. To the fullest extent permitted by law, we accept no responsibility or liability (whether in contract, tort (including negligence) or otherwise in respect of any errors or omissions in the information contained in the map and shall not be liable for any loss, damage or expense caused by such errors or omissions.

East Anglia ONE North
Onshore Cable Route (Aerial)
(6 of 7)

Drg No	EA1N-DWF-ENV-REP-IBR-000366	
Rev	3	Coordinate System:
Date	29/08/19	BNG
Figure	29.6f	Datum:
		OSGB36





3	29/08/2019	LA	Third Issue (OPEN)		
2	28/08/2019	JM	Second Issue (OPEN)	Prepared:	LA
1	02/08/2019	LA	First Issue (OPEN)	Checked:	SM
Rev	Date	By	Comment	Approved:	LT

1:5,000

Scale @ A3

0 100 200 m

Source: © Crown copyright and database rights 2019. Ordnance Survey 0100031673.  
Aerial Imagery Source: Esri, DigitalGlobe, GeoEye, Earthstar Geographics, CNES/Airbus DS, USDA, USGS, AeroGRID, IGN, and the GIS User Community  
© Natural England copyright. Contains Ordnance Survey data © Crown copyright and database right 2019.  
National Cycle Route data supplied by Sustrans and contains Ordnance Survey data © Crown copyright and database right (2019).  
This map has been produced to the latest known information at the time of issue, and has been produced for your information only.  
Please consult with the SPP Onshore GIS team to ensure the content is still current before using the information contained on this map.  
To the fullest extent permitted by law, we accept no responsibility or liability (whether in contract, tort (including negligence) or otherwise in respect of any errors or omissions in the information contained in the map and shall not be liable for any loss, damage or expense caused by such errors or omissions.

East Anglia ONE North

Onshore Cable Route (Aerial)

(7 of 7)

Drg No	EA1N-DWF-ENV-REP-IBR-000366	
Rev	3	Coordinate System: BNG Datum: OSGB36
Date	29/08/19	
Figure	29.6g	